

# CareStart™ MALARIA

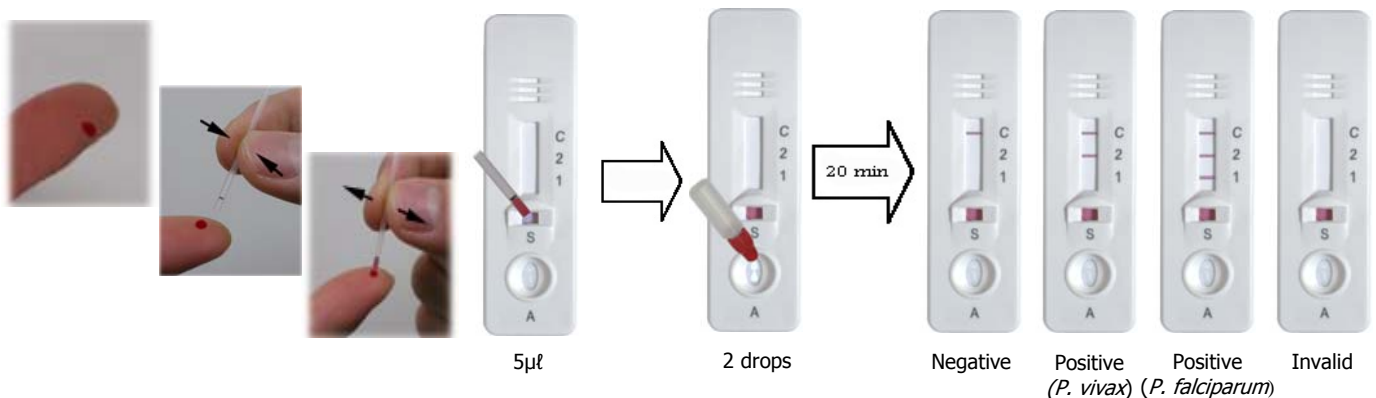
## Professional Kit

### Characteristics

- **Accurate:** Sensitivity over 95%, Specificity over 95%
- **Simple:** Two step process
- **Stable:** Room temperature storage
- **Fast:** Results in 20 minutes
- **Convenient:** No need to handle the Test Strip

### Test Procedure

- Step 1 Add 5  $\mu$ l of whole blood into sample well.  
 Step 2 Then add 2 drops or 60  $\mu$ l of assay buffer into developer well.  
 Step 3 Read test results in 20 minutes.



### Purchasing Information

Cat. No.	Description	Type	Pack Size
G0111	Malaria Device (2 line, PAN-pLDH Test)	Whole Blood	25/30/60 Test/Box
G0121	Malaria Device (3 line, P.f./PAN-pLDH Test)	Whole Blood	25/30/60 Test/Box
G0131	Malaria Device (3 line, P.f.-HRP2, PAN-pLDH Test)	Whole Blood	25/30/60 Test/Box
G0141	Malaria Device (2 line, P.f.-HRP2 Test)	Whole Blood	25/30/60 Test/Box
G0151	Malaria Device (2 line, P.f.-pLDH Test)	Whole Blood	25/30/60 Test/Box
G0161	Malaria Device (3 line, P.f.-HRP2, P.v.-pLDH, Test)	Whole Blood	25/30/60 Test/Box
G0171	Malaria Device (3 line, P.f.-HRP2, VOM.-pLDH, Test)	Whole Blood	25/30/60 Test/Box
G0181	Malaria Device (2 line, P.f.-HRP2+pLDH, Test)	Whole Blood	25/30/60 Test/Box

- ★ *P.f.* = *Plasmodium falciparum*, *P.v.* = *Plasmodium vivax*,
- ★ PAN = all four Plasmodium species, VOM = *Plasmodium vivax*, *Plasmodium ovalis*, *Plasmodium malariae*
- ★ Customized quantities are available upon request.
- ★ Strip format of the products are available.



2033 Route 130, Unit-H, Monmouth Junction, NJ 08852  
 Tel. 732-297-2222, Fax 732-297-3001, <http://www.accessbio.net>

# CareStart™ MALARIA

## SINGLE KIT

### Lab in a Pack

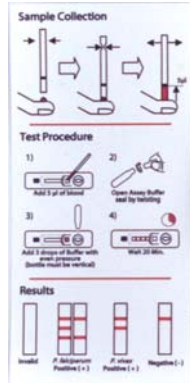
- **Contents:** All components required for the testing are included in each pack.



Foil Pouch with desiccant



Malaria Test Device



Instructions for use



Pipette



Assay Buffer



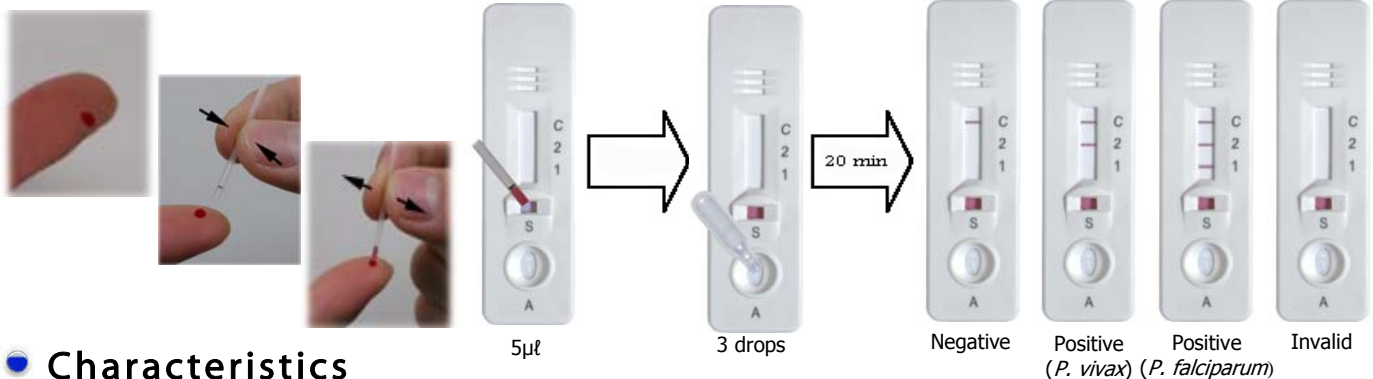
Lancet



Alcohol Pad

## ● Test Procedure

- Step 1 Add 5  $\mu$ l of whole blood into sample well.
- Step 2 Then add 3 drops or 60  $\mu$ l of assay buffer into developer well.
- Step 3 Read test results in 20 minutes.



## ● Characteristics

- **Accurate:** Sensitivity over 95%, Specificity over 95%
- **Simple:** Two step process
- **Stable:** Room temperature storage
- **Fast:** Results in 20 minutes
- **Convenient:** All testing components are included in each pack (Ideal for field tests)

## ● Purchasing Information

Cat. No.	Description	Type	Pack Size
G0111-SK	Malaria Device (2 line, <b>PAN</b> -pLDH Test)	Whole Blood	1 test/pack, (25/30/40) pack/box
G0121-SK	Malaria Device (3 line, <b>P.f./PAN</b> -pLDH Test)	Whole Blood	1 test/pack, (25/30/40) pack/box
G0131-SK	Malaria Device (3 line, <b>P.f.-HRP2, PAN</b> -pLDH Test)	Whole Blood	1 test/pack, (25/30/40) pack/box
G0141-SK	Malaria Device (2 line, <b>P.f.-HRP2</b> Test)	Whole Blood	1 test/pack, (25/30/40) pack/box
G0151-SK	Malaria Device (2 line, <b>P.f.-pLDH</b> Test)	Whole Blood	1 test/pack, (25/30/40) pack/box
G0161-SK	Malaria Device (3 line, <b>P.f.-HRP2, P.v.-pLDH</b> , Test)	Whole Blood	1 test/pack, (25/30/40) pack/box
G0171-SK	Malaria Device (3 line, <b>P.f.-HRP2, VOM.-pLDH</b> , Test)	Whole Blood	1 test/pack, (25/30/40) pack/box
G0181-SK	Malaria Device (2 line, <b>P.f.-HRP2+pLDH</b> , Test)	Whole Blood	1 test/pack, (25/30/40) pack/box

★ *P.f.* = *Plasmodium falciparum*, *P.v.* = *Plasmodium vivax*,

★ PAN = all four Plasmodium species, VOM = *Plasmodium vivax*, *Plasmodium ovalie*, *Plasmodium malariae*.

ACCESS BIO, INC

2033 Route 130, Unit-H, Monmouth Junction, NJ 08852  
Tel. 732-297-2222, Fax 732-297-3001, <http://www.accessbio.net>